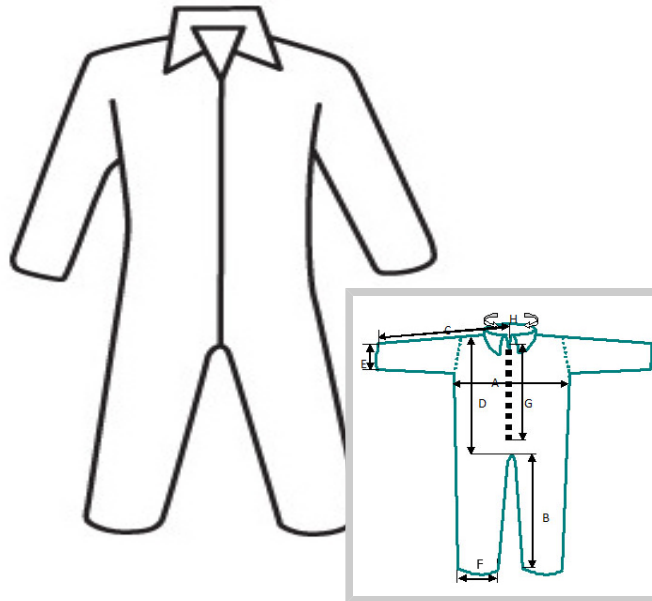




**WEST CHESTER HOLDINGS, INC.**  
**100 CORRIDOR PARK DRIVE**  
**MONROE, OHIO 45050**  
**WWW.WEST-CHESTER.NET**  
**TEL: 1.800.647.1900 • FAX: 1.513.539.2827**

DATE: Monday, June 23, 2014  
 UPDATED:

**DIVISION:** Industrial      **UOM:** CS      **UNITS PER INNER:** N/A      **UNITS PER CASE:** 25      **MIN. ORDER QTY:** 1 CS  
**BASE PART #:** 3500      **AVAIL. SIZES:**  
**ITEM NAME:** Std. Wgt. SBP Basic Coverall  
**ITEM DESCRIPTION:** Protective Clothing SBP White Coverall, Zipper front and collar - Standard Weight



**MARKETING COPY:**

Standard Weight Spunbond Polypropylene offers lightweight protection against dry particulates, keeping dirt and debris off the body or in the suit.

**FEATURES AND BENEFITS:**

- Full length zipper front for easy donning.
- Open wrist and ankles
- High level of comfort and breathability. Cost effective protection.

**KEYWORDS:**

Clothing, Apparel, disposable clothing, Coverall, zipper, standard, protective clothing, safety, protection, West Chester, manufacturing, pharmaceuticals, cleaning, food processing

**APPLICATIONS:**

Manufacturing, Pharmaceuticals, Cleaning, Food Processing

<b>MATERIAL CONTENT:</b>	100% Polypropylene exclusive of ornamentation	<b>NUMBER OF POCKETS:</b>	N/A	<b>TESTING AVAILABLE:</b>	
<b>BASE MATERIAL:</b>	Standard Weight Polypropylene	<b>ZIPPER:</b>		<b>STITCHING MATERIAL:</b>	
<b>COLOR:</b>	WHITE	<b>BUTTON TYPE:</b>		<b>STITCHES PER INCH:</b>	
<b>CONFIGURATION:</b>		<b>STORM FLAPS:</b>		<b>ADDITIONAL INFO:</b>	
<b>SEAM CONSTRUCTION:</b>	Serged	<b>DUTY RATE:</b>	0	<b>ADDITIONAL INFO:</b>	

SKU	PIECE UPC	PIECE WGT	INNER PACK GTIN	MASTER PACK GTIN	INNER PACK DIMENSIONS					MASTER CARTON DIMENSIONS				
					L	W	H	WGT	VOL. FT3	L	W	H	WGT	VOL. FT3
3500/L	662909355003		N/A	10662909355000	13	10.25	8.75	2.5	N/A	13.5	9.5	7.5	5.2	0.56
3500/M	662909356000		N/A	10662909356007	13	10.25	8.75		N/A	13.25	9.5	7.5	4.9	0.55
3500/XL	662909354006		N/A	10662909354003	13	10.25	8.75		N/A	13.5	9.75	7.75	5.6	0.59
3500/XXL	662909353009		N/A	10662909353006	13	10.25	8.75		N/A	13.5	9.5	8.25	5.8	0.61
3500/XXXL	662909352002		N/A	10662909352009	13	10.25	8.75		N/A	13.5	9.5	8.5	6.2	0.63
3500/XXXXL	662909351005		20662909351009	10662909351002	13	10.25	8.75		N/A	0	0	0	5.95	0.71
3500/XXXXXL	662909355058		20662909355052	10662909355055	13	10.25	8.75		N/A	0	0	0	5.95	0.71

STANDARD DIMENSIONS		Large		Medium		XLarge		2XLarge		3XLarge		4XLarge		5XLarge	
		IN	CM	IN	CM	IN	CM	IN	CM	IN	CM	IN	CM	IN	CM
D - Body Length	+/-1/8"	30	76.2	36.5	92.71	39	99.06	41	104.14	40	101.6	42	106.68	43.8	111.25
F - Cuffs on Pants	+/-1/8"	10.2	25.91	10.5	26.67	10.2	25.91	11	27.94	11.4	28.96	11	27.94	10	25.4
B - Leg Inseam	+/-1/8"	30	76.2	28	71.12	29	73.66	31	78.74	31	78.74	33.5	85.09	34.3	87.12
I - Hood Height	+/-1/8"	N/A	N/A	N/A	N/A	N/A	N/A	N/A	N/A	N/A	N/A	N/A	N/A	N/A	N/A
E - Cuffs on Sleeves	+/-1/8"	7.8	19.81	6.7	17.02	7.1	18.03	7.5	19.05	7.5	19.05	7.5	19.05	5.6	14.22
C - Sleeve Outseam	+/-1/8"	34.5	87.63	34.5	87.63	36.5	92.71	37	93.98	38	96.52	38.5	97.79	40.4	102.62
J - Boot Length	+/-1/8"	N/A	N/A	N/A	N/A	N/A	N/A	N/A	N/A	N/A	N/A	N/A	N/A	N/A	N/A
G - Zippers for Opening	+/-1/8"	28	71.12	27	68.58	27.5	69.85	27	68.58	28.5	72.39	28	71.12	27.6	70.10
H - Neck	+/-1/8"	N/A	N/A	N/A	N/A	N/A	N/A	N/A	N/A	N/A	N/A	N/A	N/A	N/A	N/A
K - Boot Height	+/-1/8"	26	66.04	24.5	62.23	27	68.58	28	71.12	28	71.12	32.5	82.55	33.7	85.60
A - Chest															

Disclaimer: West Chester Holdings, Inc. and its suppliers make no guarantee of results and assume no obligation or liability relative to the use of the items contained herein. In accordance with 29 CFR 1910.138. Anyone intending to use these items should first verify with a safety director that the item(s) selected is suitable for the intended use. No oral presentation inconsistent with the above shall be binding to West Chester Holdings,

