

Spintec™ Showerhead and Drench Shower Parts

- Includes integral 22gpm flow restrictor
- Fully distributes water throughout spray pattern
- Compact design minimizes footprint in your facility



□ **S24-192**
Plastic shroud and ring
(showerhead not included)



□ **S24-193**
Stainless steel shroud and ring
(showerhead not included)



□ **S24-194**
Plastic showerhead and 1"
diameter 90° elbow



□ **S24-200**
Stainless steel showerhead and
1" diameter 90° elbow



□ **S24-195**
Plastic shroud with ring, plastic
showerhead and 1" diameter 90° elbow



□ **S24-196**
Stainless steel shroud with ring, plastic
showerhead and 1" diameter 90° elbow



□ **S24-202**
Plastic showerhead, white steel in-ceiling recessed shroud
assembly, ring, coupling and 1" diameter 90° elbow



□ **S154-147**
Ring only



□ **128-156A**
Drench shower handle for standard
(non-barrier-free) units (25½" x 9")

□ **128-156B**
Drench shower handle for flush-mount
(non-barrier-free) units (36" x 9")

□ **128-156G**
Drench shower handle for heat trace
units (27" x 9")

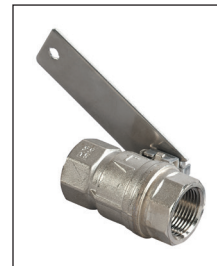


□ **128-156C**
Drench shower handle (48" x 9")

□ **128-156D**
Drench shower handle (standard; shipped
with barrier-free showers) (45½" x 9")

□ **128-156E**
Drench shower handle (57" x 9")

□ **128-156F**
Drench shower handle (69" x 9")

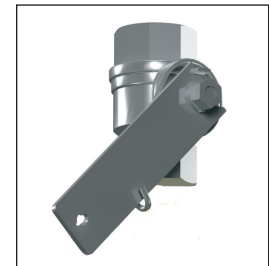


□ **S30-059**
Chrome-plated brass 1"
NPT ball valve with lever

□ **S27-278**
Chrome-plated brass 1"
NPT ball valve only

□ **S30-061 (not shown)**
Stainless steel 1" NPT
ball valve with lever

□ **S27-276 (not shown)**
Stainless steel 1" NPT
ball valve only



□ **S19-0011**
Self-closing ball valve
*NOTE: Self-closing ball valves
are not ANSI Z358.1 compliant
Appendix B3. However an
exception may be made in a
'school laboratory' situation.
Contact local authorities
regarding specific application*