

## SCRUB SINKS

### Universal Features

**Width: 25" Depth: 19.5" Bowl Depth 10.5"**

**Designed for use in hospitals, schools, factories and institutions.**

Scrub Sinks are constructed from heavy duty #14 gauge type 304 stainless steel. All models have a 7" high backsplash and a 3-1/4" drain opening. Exposed surfaces have a blended uniform satin finish. Furnished with wall mounting bracket and stainless steel support brackets.



### SANI-LAV Model 531F

**Designed for use in hospitals, schools, factories and institutions.**

#### Features

- Splash mount swivel gooseneck faucet with 4" wrist blade handles
- Wall mounting brackets and strainer with basket
- **Complies with NSF/ANSI 372 low lead**



Model 531F

### SANI-LAV Model 531A and 531B

**Hands-free design for use in hospitals, schools, factories and institutions.**

#### Features

- Splash mount 6" gooseneck spout faucet – chrome plated, solid brass construction
- AC or Battery powered with adjustable sensor range
- Model 201 mixing check-valve (mechanical)
- Wall mounting brackets and strainer with basket
- **Complies with NSF/ANSI 372 low lead**



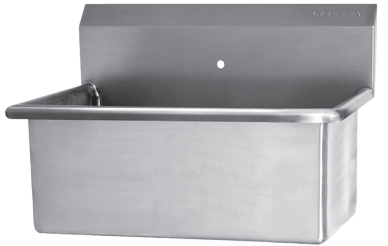
Model 531A  
Model 531B

### SANI-LAV Model 5310

**Scrub sink with single faucet mounting hole.**

#### Features

- One 0.875" faucet holes
- Wall mounting brackets and strainer with basket
- **Certified NSF Standard 2**



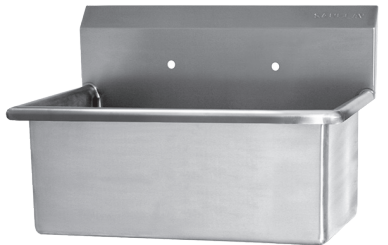
Model 5310

### SANI-LAV Model 5318

**Scrub sink with 8" on center faucet mounting holes.**

#### Features

- Two 0.875" faucet holes on 8" centers
- Wall mounting brackets and strainer with basket
- **Certified NSF Standard 2**



Model 5318