

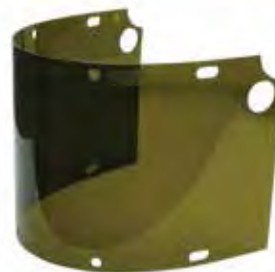
FACE SHIELDS



4178CL



4199GDTVGY



6750AF25

High Performance® Face Shield Windows

- Made from durable 0.060" thick propionate
- Great combination of impact protection, chemical resistance and clarity
- Available in 3 widths to meet specific environmental needs
- Meets ANSI Z87.1 standards and certified to CSA Z94.3

SKU	View Size	L x W	Window Tint	Mounting Crown
4118CL	Standard	8" x 11.25"	Clear	F300
4118DGN	Standard	8" x 11.25"	Dark Green	F300
4178CL	Wide	8" x 16.5"	Clear	F400, F500
4178DGN	Wide	8" x 16.5"	Dark Green	F400, F500
4178IRUV3	Wide	8" x 16.5"	Shade 3.0	F400, F500
4178IRUV5	Wide	8" x 16.5"	Shade 5.0	F400, F500
4199CL	Extended	9.75" x 19"	Clear	F400, F500
4199DGN	Extended	9.75" x 19"	Dark Green	F400, F500
4199IRUV3	Extended	9.75" x 19"	Shade 3.0	F400, F500
4199IRUV5	Extended	9.75" x 19"	Shade 5.0	F400, F500

Specialty Windows

SKU	View Size	L x W	Window Tint/Usage	Mounting Crown
4178IRUV8	Wide	8" x 16.5"	Shade 8.0/Plasma Cutting	F400, F500
4178TVGY	Wide	8" x 16.5"	True View Gray/Outdoor	F400, F500
S178	Wide	8" x 16.5"	#24 Stainless Mesh/ Light Impact	F400, F500
4199GDTVGY	Extended	9.75" x 19"	Gold Coated TCV Gray	F400, F500
S199	Extended	9.75" x 19"	#24 Stainless Mesh/ Light Impact	F400, F500

Dual Crown Windows (for use with Fibre-Metal Dual Crown Face Shield Systems)

SKU	View Size	L x W	Window Tint	Mounting Crown
4750CL	Wide	8" x 16.5"	Clear	FM70 Dual Crown Systems
4750IRUV5	Wide	8" x 16.5"	Shade 5	FM70 Dual Crown Systems
6750CL	Wide	8" x 16.5"	Clear	FM400 and FM500 Dual Crown Systems
6750IRUV5	Wide	8" x 16.5"	Shade 5	FM400 and FM500 Dual Crown Systems
6750AF25	Wide	8" x 16.5"	Green 25-cal Arc	FM400DCAF25 only



by Honeywell

Call Customer Care at 800 430-4110.