



HH28



HH119



HH81



HH82



HH91



HH101



HH97



HH89



HH112



HH118



HH54



HH20



HH100



HH12

Bilingual Hard Hat Labels



HH37



HH39



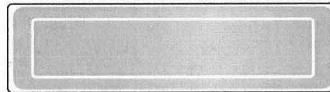
HH87

Reflective Pressure Sensitive Strips

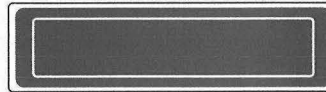
»Now a fast, easy way to increase visibility in hazardous situations. Can be placed on hard hats or any other surface.

- Easy peel off strips
- Weatherproof
- 1" x 4"
- 16/sheet

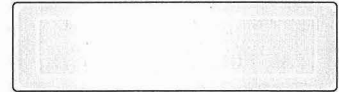
Size	Qty	Price
1" x 4"	16/pk	\$9.44



HH200



HH201



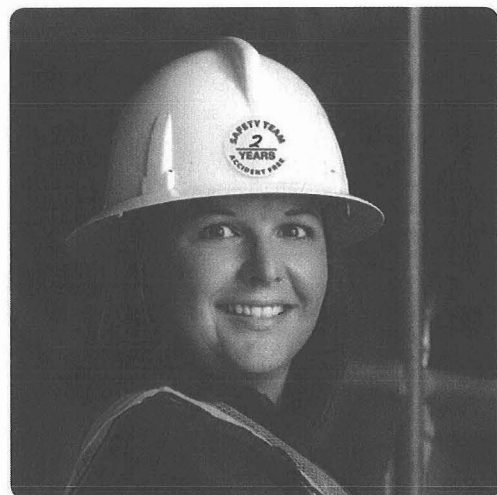
HH202

Customize Your Hard Emblems

»Have a special message or graphic that you want added to a hard hat emblem? No problem. Let our designers work with you to develop the perfect graphic for you!

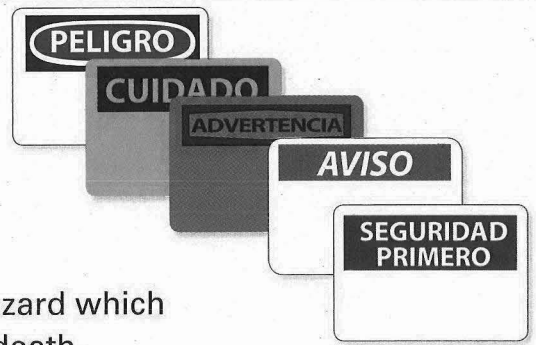
- Made from pressure sensitive vinyl
- Weatherproof
- 2" or 3" sizes to choose from

Size	25 - 49	50 - 99	100 - 249	250 - 499	500 - 999	1000+
2" Dia	\$2.00	\$1.67	\$1.09	\$0.69	\$0.36	\$0.33
3" Dia	\$2.08	\$1.74	\$1.13	\$0.72	\$0.49	\$0.44



Determining Header Selection Guide

OSHA and ANSI requires signage to indicate and define specific hazards that, without identification, may lead to injury or death. Select your sign with the header that indicates the degree of hazard in your application.



Use **DANGER** to indicate an immediate hazard which has a high probability to severe injury or death.



Use **WARNING** to indicate a potentially hazardous situation which, if not avoided, can result in serious injury or death.



Use **CAUTION** to indicate a potentially hazardous situation which may result in minor or moderate injury, but not death.



Use **NOTICE** to provide general information needed to avoid confusion.



These and similar headings are used with information about housekeeping, first aid, health, medical equipment, sanitation and general safety.



» Guide to Sign Legibility

Viewing Distance	Letter Height
30'	3/4"
40'	1"
55'	1 1/4"
65'	1 1/2"
75'	1 3/4"
85'	2"
115'	2 1/2"
135'	3"
150'	4"
200'	6"
350'	8"

Determine the viewing distance for your sign, then contact our Inside Sales Team and we'll do the rest!

