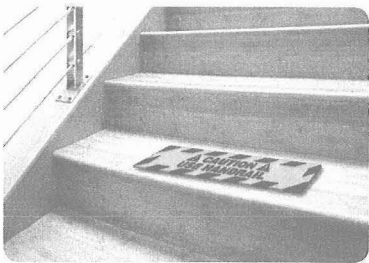


Anti-Slip Cleats

- »Warn employees of potential hazards.
- Made from pressure sensitive vinyl laminated with anti-skid tread
- Permanent adhesive back with peel off liner
- Adheres to smooth, clean and dry surfaces
- Designed for heavy pedestrian traffic areas
- 6" x 24"



Size	Price
6" x 24"	\$15.40



WFS621



WFS626



WFS622



WFS627



WFS623



WFS628



WFS624



WFS629



WFS625



WFS630

Floor Stencils

- »Paint a message to keep certain areas clear.
- Made from a 24" x 24" flexible .060 polyethylene plastic
- Designed to withstand repeated use
- Easy to clean, simply wipe off dried paint flakes after use

Size	Price
24" x 24"	\$55.91



PMS235



PMS236



PMS234



PMS237



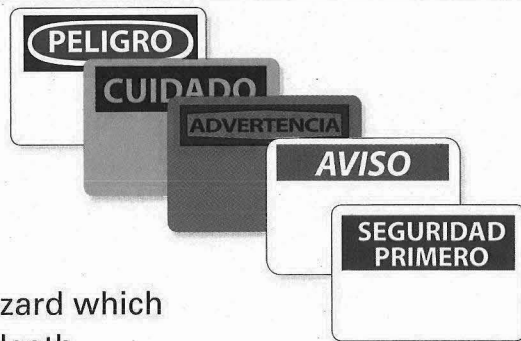
PMS233



PMS232

## Determining Header Selection Guide

OSHA and ANSI requires signage to indicate and define specific hazards that, without identification, may lead to injury or death. Select your sign with the header that indicates the degree of hazard in your application.



Use **DANGER** to indicate an immediate hazard which has a high probability to severe injury or death.



Use **WARNING** to indicate a potentially hazardous situation which, if not avoided, can result in serious injury or death.



Use **CAUTION** to indicate a potentially hazardous situation which may result in minor or moderate injury, but not death.



Use **NOTICE** to provide general information needed to avoid confusion.



These and similar headings are used with information about housekeeping, first aid, health, medical equipment, sanitation and general safety.



## » Guide to Sign Legibility

Viewing Distance	Letter Height
30'	3/4"
40'	1"
55'	1 1/4"
65'	1 1/2"
75'	1 3/4"
85'	2"
115'	2 1/2"
135'	3"
150'	4"
200'	6"
350'	8"

Determine the viewing distance for your sign, then contact our Inside Sales Team and we'll do the rest!

