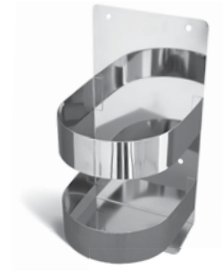


Model 562 Stainless Steel Wall Mount Gallon Bottle Dispenser Holder

- Heavy duty 14 and 16 gauge type 304 stainless steel construction
- Electropolished to enhance corrosion resistance
- Holds a standard 1 gallon plastic soap container



All Models

Model 563 Stainless Steel Soap Dispenser and 16 oz. bottle

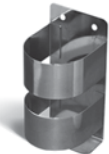
- Heavy duty 18 gauge type 304 stainless steel construction
- Electropolished to enhance corrosion resistance
- Vinyl bottle with 16 oz. capacity
- Easy to clean



Model 563



Model 5631



Model 562

Model 5632

Model 5631 16 oz. bottle and pump only

Model 5632 Stainless steel, 16 oz. bottle holder only

Model 568 Stainless Steel Soap Dispenser and 18 oz. bottle

- Heavy duty 18 gauge type 304 stainless steel construction
- Electropolished to enhance corrosion resistance
- Vinyl bottle with 32 oz. capacity
- Easy to clean



Model 568



Model 5681



Model 5682

Model 5681 32 oz. bottle and pump only

Model 5682 Stainless steel, 32 oz. bottle holder only

Models 2021, 2023, 2022 Stainless Steel Glove Dispensers

- Mounts on wall or countertop
- Ideal for medical, dental, industrial and food service applications
- Heavy duty 18 gauge stainless steel construction
- Electropolished to enhance corrosion resistance
- Easy to clean
- **Certified NSF Standard 2 - Food Equipment**

Model 2021

- Dispenser holds 1 Box of Gloves
- Inside dimensions – 5.5"W x 10.75"H x 3.38"D



Model 2021



Model 2023

Model 2023

- Dispenser holds 2 Boxes of Gloves
- Inside dimensions – 10"W x 11.625"H x 3.38"D



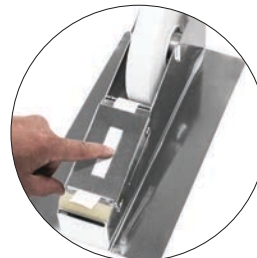
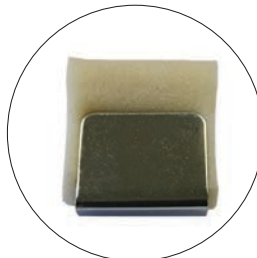
Model 2022

Model 2022

- Dispenser holds 3 Boxes of Gloves
- Inside dimensions – 10"W x 17"H x 3.38"D

Model T1 Stainless Steel Pull & Tear Tape Dispenser

- Heavy duty stainless steel construction
- For counter top use in butcher shops, delis and bakeries
- Electropolished to enhance corrosion resistance
- Easy to clean
- Replaceable sponge insert
- Works with 1" or 1 1/2" wide, Gummed tape
- 11" x 5 3/4" x 4" high
- Tape not included



Model T1