

## Spintec™ Showerhead and Drench Shower Parts

- Includes integral 22gpm flow restrictor
- Fully distributes water throughout spray pattern
- Compact design minimizes footprint in your facility



□ **S24-192**  
Plastic shroud and ring  
(showerhead not included)



□ **S24-193**  
Stainless steel shroud and ring  
(showerhead not included)



□ **S24-194**  
Plastic showerhead and 1"  
diameter 90° elbow



□ **S24-200**  
Stainless steel showerhead and  
1" diameter 90° elbow



□ **S24-195**  
Plastic shroud with ring, plastic  
showerhead and 1" diameter 90° elbow



□ **S24-196**  
Stainless steel shroud with ring, plastic  
showerhead and 1" diameter 90° elbow



□ **S24-202**  
Plastic showerhead, white steel in-ceiling recessed shroud  
assembly, ring, coupling and 1" diameter 90° elbow



□ **S154-147**  
Ring only



□ **128-156A**  
Drench shower handle for standard  
(non-barrier-free) units (25½" x 9")

□ **128-156B**  
Drench shower handle for flush-mount  
(non-barrier-free) units (36" x 9")

□ **128-156G**  
Drench shower handle for heat trace  
units (27" x 9")



□ **128-156C**  
Drench shower handle (48" x 9")

□ **128-156D**  
Drench shower handle (standard; shipped  
with barrier-free showers) (45½" x 9")

□ **128-156E**  
Drench shower handle (57" x 9")

□ **128-156F**  
Drench shower handle (69" x 9")

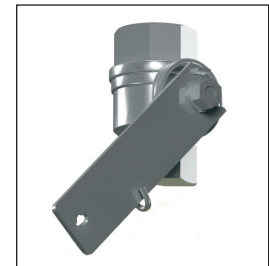


□ **S30-059**  
Chrome-plated brass 1"  
NPT ball valve with lever

□ **S27-278**  
Chrome-plated brass 1"  
NPT ball valve only

□ **S30-061 (not shown)**  
Stainless steel 1" NPT  
ball valve with lever

□ **S27-276 (not shown)**  
Stainless steel 1" NPT  
ball valve only



□ **S19-0011**  
Self-closing ball valve  
*NOTE: Self-closing ball valves  
are not ANSI Z358.1 compliant  
Appendix B3. However an  
exception may be made in a  
'school laboratory' situation.  
Contact local authorities  
regarding specific application*