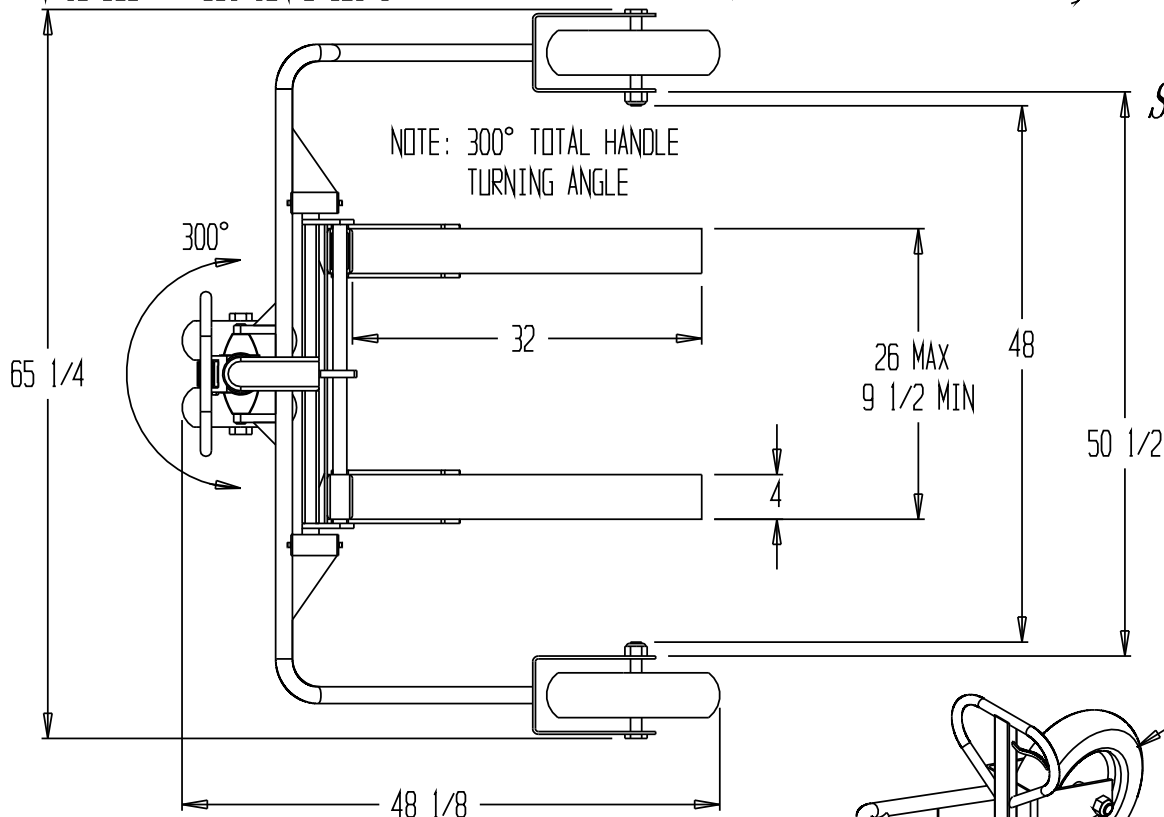


****SPECIAL UNITS ARE NON-RETURNABLE**
***AVAILABLE AT ADDITIONAL COSTS**

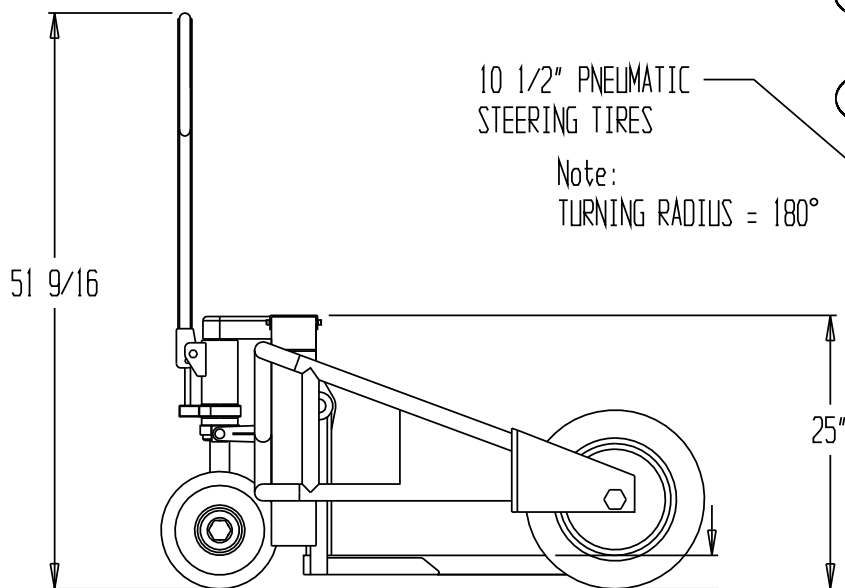
ALL TERRAIN PALLET TRUCK, ALL-T-2

REV. A, 1-23-09 SR
REV. B, 4-06-10 PE



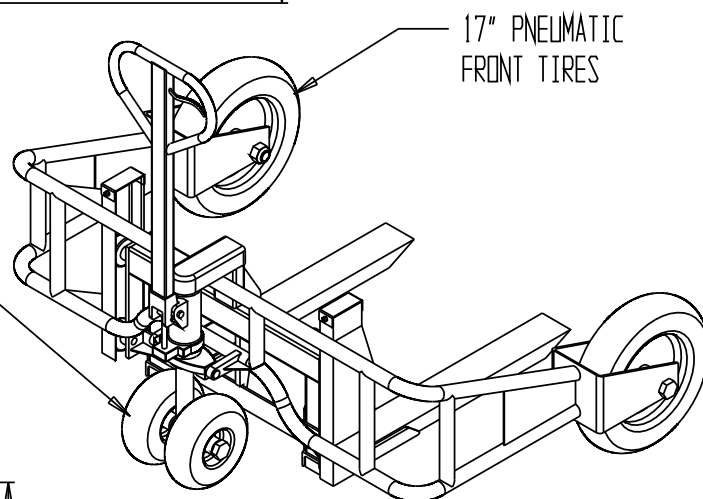
SPECIAL FEATURES

NONE



10 1/2" PNEUMATIC
STEERING TIRES

Note:
TURNING RADIUS = 180°



3-D REFERENCE
SCALE 1:20

PRODUCTION WILL START UPON
RECEIPT OF SIGNED APPROVAL
DRAWING

STANDARD FEATURES

MODEL NUMBER: ALL-T-2

CAPACITY: 2,000 LB. AT 12" HORIZONTAL LOAD CENTER
1,500 LB. AT 15" HORIZONTAL LOAD CENTER
1,000 LB. AT 24" HORIZONTAL LOAD CENTER
(FOR USE WITH 48" LG PALLET)

3 1/8 LOWERED
9 RAISED

OVERALL WIDTH: 64 1/2"
OVERALL LENGTH: 47 7/8"
OVERALL HEIGHT: 51 9/16"
OVERALL FORK WIDTH: 9 1/2" TO 26"
FORK LENGTH: 32"
FORK LOWERED HEIGHT: 3 1/8"
FORK RAISED HEIGHT: 9"
INDIVIDUAL FORK WIDTH: 4"
STRADDLE I.D.: 50 1/2"

APPROVAL

I, the undersigned, hereby approve this print
[] As drawn [] As marked
This includes my approval of design & dimensions.
Signed: _____
Date: _____

DISTRIBUTOR'S NAME:

VESTIL MANUFACTURING

DRAWN BY: S ROSE

DATE: 6-1-04

REFERENCE:

P.O.#: _

W.O.#: _

SALES: _

DRWG./FILE NAME:

scale: 1:18

ALL-T-2