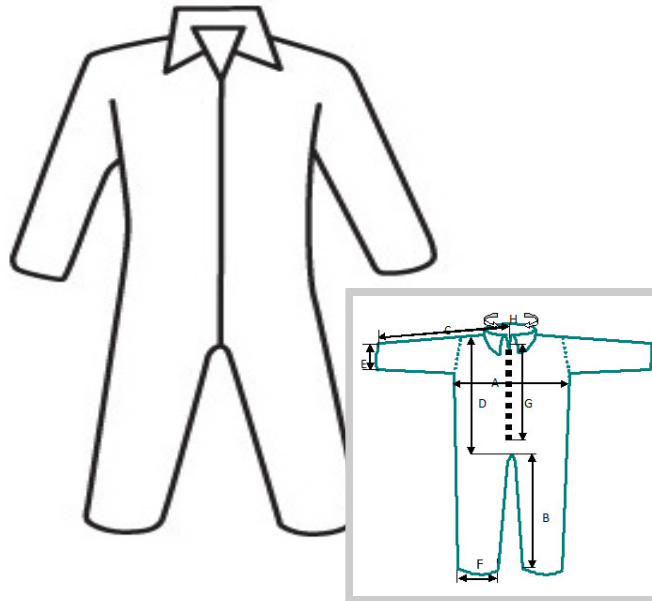




WEST CHESTER HOLDINGS, INC.
100 CORRIDOR PARK DRIVE
MONROE, OHIO 45050
WWW.WEST-CHESTER.NET
TEL: 1.800.647.1900 • FAX: 1.513.539.2827

DATE: Monday, June 23, 2014
UPDATED:

DIVISION: Industrial UOM: CS UNITS PER INNER: N/A UNITS PER CASE: 25 MIN. ORDER QTY: 1 CS
BASE PART #: U1100 AVAIL. SIZES:
ITEM NAME: Hvy.Wgt.SBP Basic Coverall
ITEM DESCRIPTION: Protective Clothing SBP White Coverall, Zipper front and collar - Heavy weight



MARKETING COPY:

Heavy Weight Spunbond Polypropylene offers protection against dry particulates, keeping dirt and debris off the body or in the suit.

FEATURES AND BENEFITS:

- Full length zipper front for easy donning.
- Open wrist and ankles
- High level of comfort and breathability. Cost effective protection.

KEYWORDS:

Clothing, Apparel, PE, Coated, Polyethylene, disposable clothing, Coverall, safety, protection, West Chester, general labor, pharmaceuticals, cleaning, laboratory

APPLICATIONS:

General labor, pharmaceuticals, cleaning, laboratory

MATERIAL CONTENT:	100% Polypropylene exclusive of ornamentation	NUMBER OF POCKETS:	N/A	TESTING AVAILABLE:	
BASE MATERIAL:	Heavyweight Polypropylene	ZIPPER:		STITCHING MATERIAL:	
COLOR:	WHITE	BUTTON TYPE:	N/A	STITCHES PER INCH:	
CONFIGURATION:		STORM FLAPS:	No	ADDITIONAL INFO:	
SEAM CONSTRUCTION:	Serged	DUTY RATE:	0	ADDITIONAL INFO:	

SKU	PIECE UPC	PIECE WGT	INNER PACK GTIN	MASTER PACK GTIN	INNER PACK DIMENSIONS					MASTER CARTON DIMENSIONS				
					L	W	H	WGT	VOL. FT3	L	W	H	WGT	VOL. FT3
U1100/L	662909686602		N/A	10662909686609	N/A	N/A	N/A		N/A	14	9.75	11.25	8.4	0.89
U1100/M	662909679000		N/A	10662909679007	N/A	N/A	N/A		N/A	14	9.5	11	8.4	0.85
U1100/XL	662909797759		N/A	10662909797756	N/A	N/A	N/A		N/A	13	9.75	12	9	0.88
U1100/XXL	662909797858		N/A	10662909797855	N/A	N/A	N/A		N/A	13.75	10	12.25	9.6	0.98
U1100/XXXL	662909797957		N/A	10662909797954	N/A	N/A	N/A		N/A	13.5	10	12.75	10.3	1.00
U1100/XXXXL	662909705341		N/A	10662909705348	N/A	N/A	N/A		N/A	13.75	10.5	15	11.4	1.25
U1100/XXXXXL	662909705358		N/A	10662909705355	N/A	N/A	N/A		N/A	13.5	9.5	13	11	0.96

STANDARD DIMENSIONS		Large		Medium		XLarge		2XLarge		3XLarge		4XLarge		5XLarge	
		IN	CM	IN	CM	IN	CM	IN	CM	IN	CM	IN	CM	IN	CM
D - Body Length	+/-1/8"	36.4	92.46	35.5	90.17	39	99.06	40.7	103.38	43	109.22	44.1	112.01	46.5	118.11
F - Cuffs on Pants	+/-1/8"	8.9	22.61	10	25.4	10	25.4	9.5	24.13	11.4	28.96	11.4	28.96	10.3	26.16
B - Leg Inseam	+/-1/8"	19	48.26	27.5	69.85	29	73.66	29.3	74.42	31.7	80.52	32.5	82.55	33.5	85.09
I - Hood Height	+/-1/8"	N/A	N/A	N/A	N/A	N/A	N/A	N/A	N/A	N/A	N/A	N/A	N/A	N/A	N/A
E - Cuffs on Sleeves	+/-1/8"	5.6	14.22	7.3	18.54	7.3	18.54	6.4	16.26	7.3	18.54	7.3	18.54	7.5	19.05
C - Sleeve Outseam	+/-1/8"	33.5	85.09	33	83.82	36	91.44	36.5	92.71	37	93.98	37.6	95.50	37.9	96.27
J - Boot Length	+/-1/8"	N/A	N/A	N/A	N/A	N/A	N/A	N/A	N/A	N/A	N/A	N/A	N/A	N/A	N/A
G - Zippers for Opening	+/-1/8"	26	66.04	28	71.12	29.5	74.93	27.3	69.34	30.5	77.47	30.5	77.47	27.4	69.60
H - Neck	+/-1/8"	23.6	59.94	23.6	59.94	23.6	59.94	23.6	59.94	23.6	59.94	23.6	59.94	23.6	59.94
K - Boot Height	+/-1/8"	N/A	N/A	N/A	N/A	N/A	N/A	N/A	N/A	N/A	N/A	N/A	N/A	N/A	N/A
A - Chest		25.8	65.53	24	60.96	27.5	69.85	28.6	72.64	31	78.74	32	81.28	33.2	84.33

Disclaimer: West Chester Holdings, Inc. and its suppliers make no guarantee of results and assume no obligation or liability relative to the use of the items contained herein. In accordance with 29 CFR 1910.138. Anyone intending to use these items should first verify with a safety director that the item(s) selected is suitable for the intended use. No oral presentation inconsistent with the above shall be binding to West Chester Holdings,

