

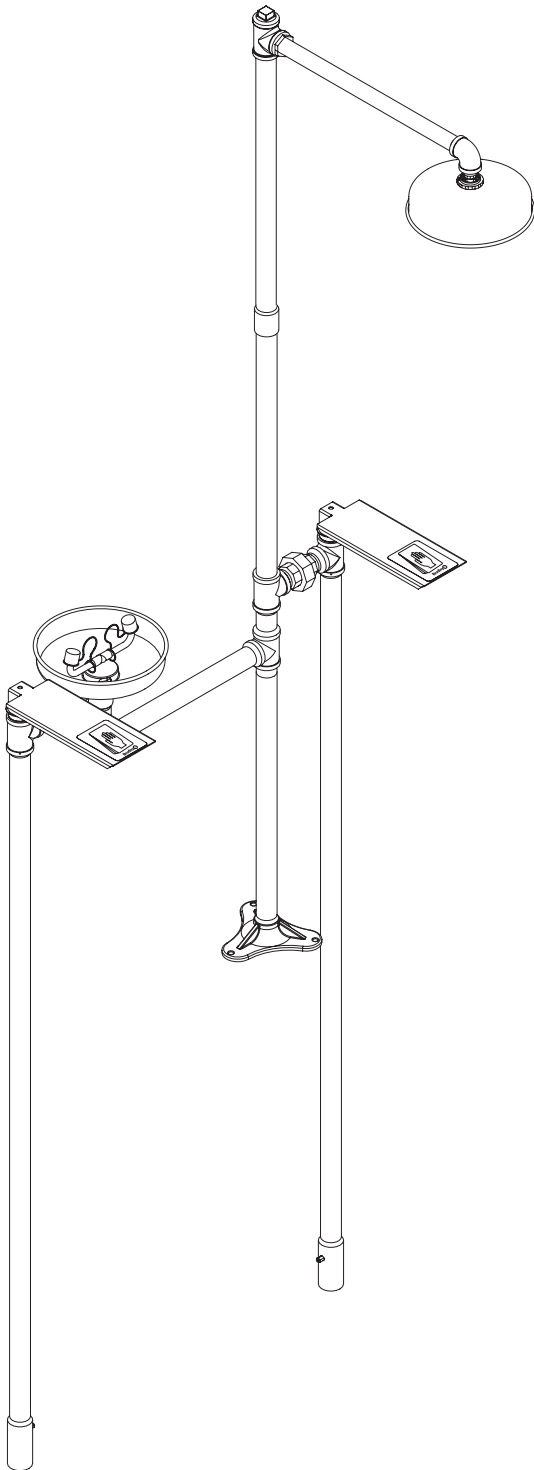
Installation

E19-310NN

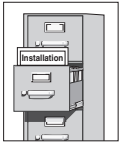
**Frost-Proof Combination Drench
Shower and Eyewash (3' Bury Depth)**

Table of Contents

Pre-Installation Information	2
Installation	3
Assembly of Components	4-5
Parts List	6



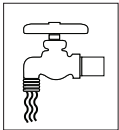
IMPORTANT



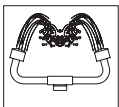
Read this installation manual completely to ensure proper installation, then file it with the owner or maintenance department. Compliance and conformity to drain requirements and other local codes and ordinances is the responsibility of the installer.



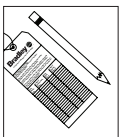
Separate parts from packaging and make sure all parts are accounted for before discarding any packaging material. If any parts are missing, do not begin installation until you obtain the missing parts.



Flush the water supply lines before beginning installation and after installation is complete. Test the unit for leaks and adequate water flow. Main water supply to the eyewash should be "ON" at all times. Provisions shall be made to prevent unauthorized shutoff.



The ANSI Z358.1 standard requires an uninterrupted supply of flushing fluid. Bradley plumbed emergency fixtures require a minimum of 30 PSI (0.21 MPa) flowing pressure. Flushing fluid should be tepid per ANSI Z358.1.



The inspection and testing results of this equipment should be recorded weekly to verify proper operation. This equipment should be inspected annually to ensure compliance with ANSI Z358.1.



Workers who may come in contact with potentially hazardous materials should be trained regarding the placement and proper operation of emergency equipment per ANSI Z358.1.

For questions regarding the operation or installation of this product, visit www.bradleycorp.com or call 1-800-BRADLEY.



Product warranties and service parts information may also be found under "Products" on our web site at www.bradleycorp.com.

Supplies Required:

- M10 floor anchors and bolts
- Teflon tape and pipe sealant
- Material for concrete footings
- Crushed stone
- Piping to 1¼" BSP water supply inlet for eyewash
- Piping to 1¼" BSP water supply inlet for shower
- Piping to 1¼" NPT drain outlet
- Adequate supply pipe supports
- Minimum 102 mm (4") drain to accommodate 115 liters (30 gallons) per minute discharge for shower waste
- OPTIONAL: Sign-mounting hardware

Installation

Step 1: Concrete footing and base

1. Pour a concrete footing for the drench shower adjacent to the excavation for supplies and drains.

IMPORTANT! Make sure the plugged end of the nipple is up.

2. Assemble the base, the 826mm (32-1/2") long plugged pipe, the two pipe tees and the 76mm (3") plugged nipple (refer to page 4).
3. Attach the base to the footing with suitable fasteners (supplied by installer).

Step 2: Bowl assembly

1. Assemble the bowl components as shown on page 4 and attach the assembly to the base unit.

IMPORTANT! Make sure the uppermost tee and the supply inlet (bowl) are aligned toward their respective excavations.

Step 3: Valve assembly

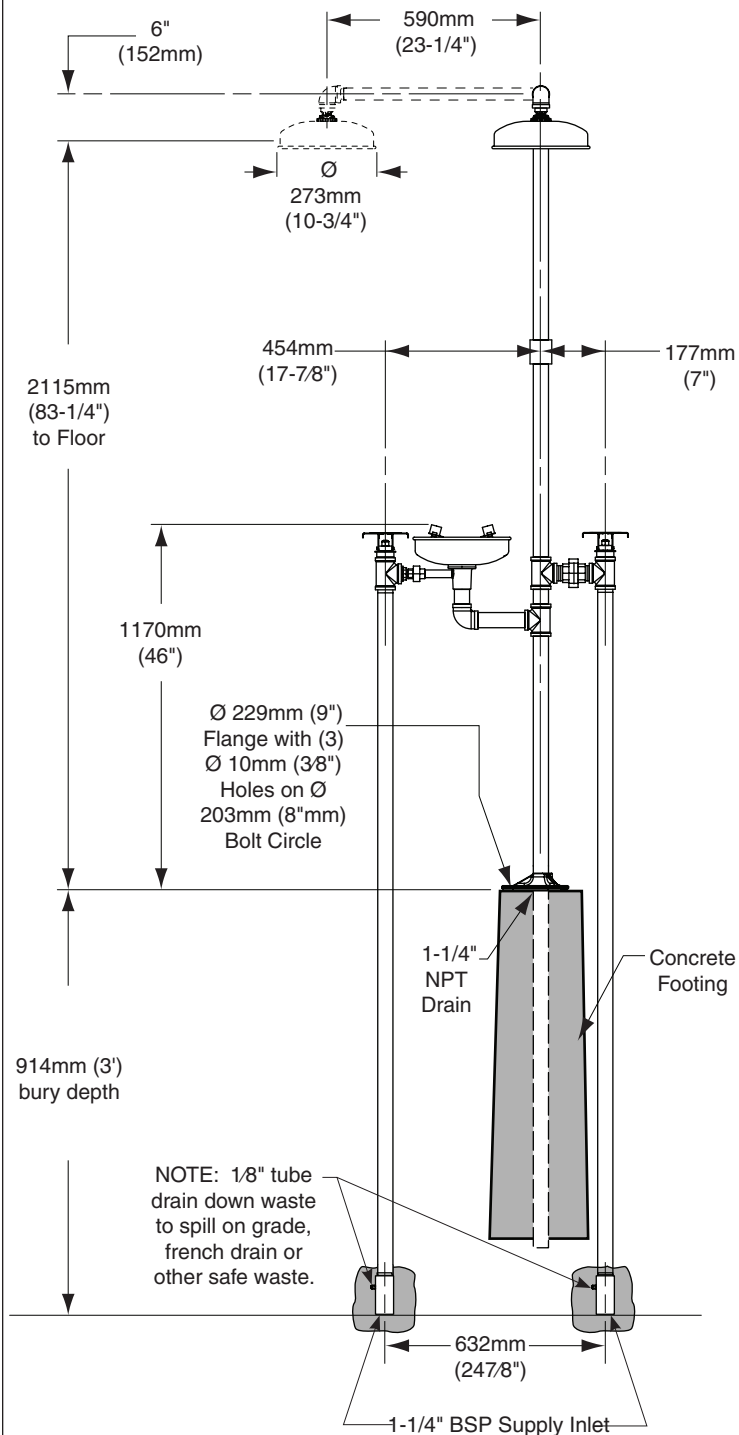
1. Lower one valve assembly into the excavation for the drench shower and attach the valve to the tee using the close nipples and union as shown on page 4. Repeat for the eyewash valve.
 - This will establish the heights of the valves for connection to the supplies and drains.
2. Connect the valves to the supplies and weep valves to drain down waste outlet.
3. Backfill as specified.

Step 4: Remaining components

1. Assemble the remaining components.
 - Apply pipe sealant to all pipe joints.
 - Use the rubber grip pad provided or a strap wrench around pipes when tightening to prevent marring. Place the grip pad on the pipe, then put the wrench over the grip pad and turn the pipe with the wrench.

IMPORTANT! Do not rely on Bradley's Drench Shower to support supply piping.

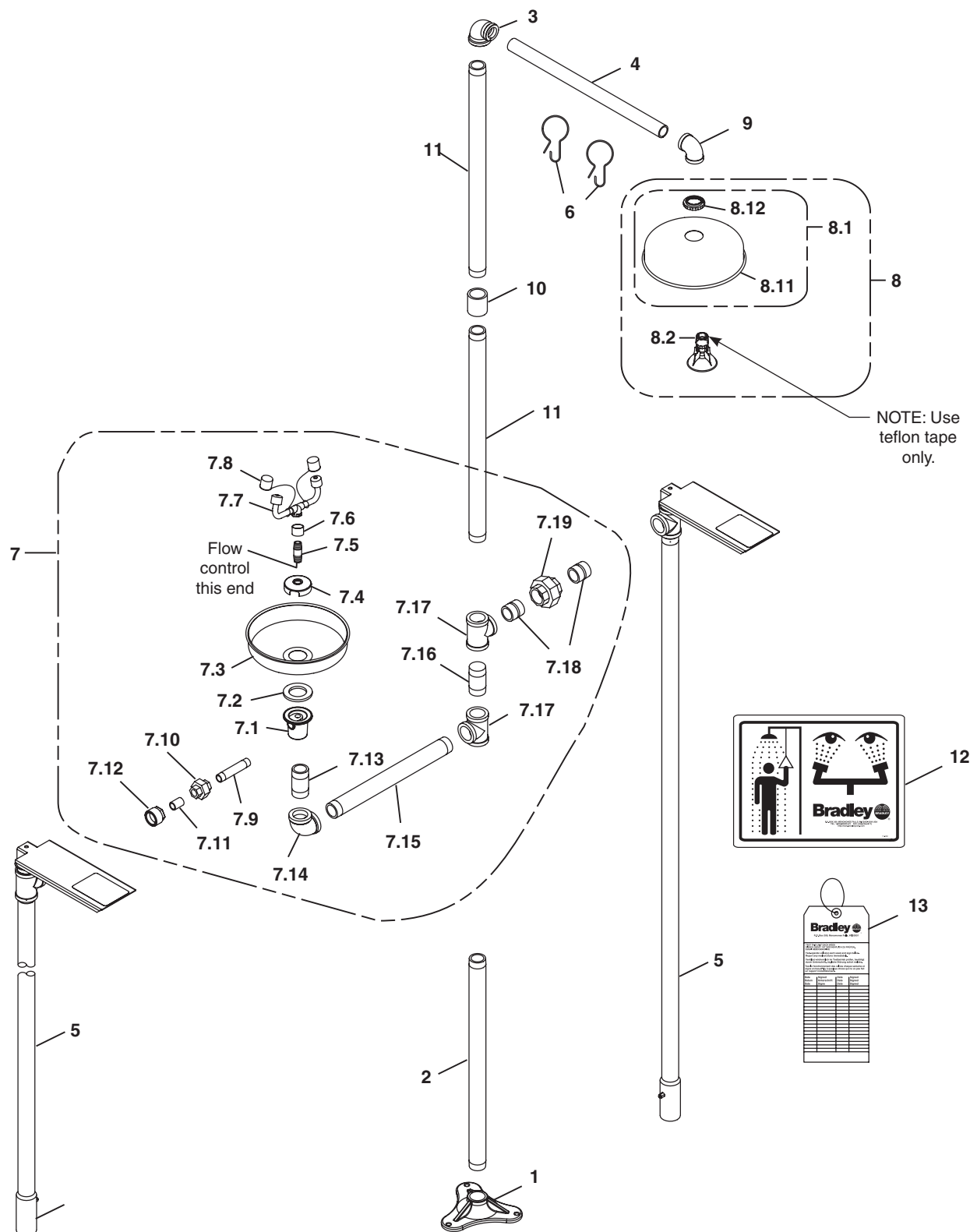
2. Hang the safety sign from the unit with the curtain hooks provided (or mount it to the wall using sign-mounting hardware supplied by installer).
3. Open the water supply lines. Test for leaks and adequate water flow.



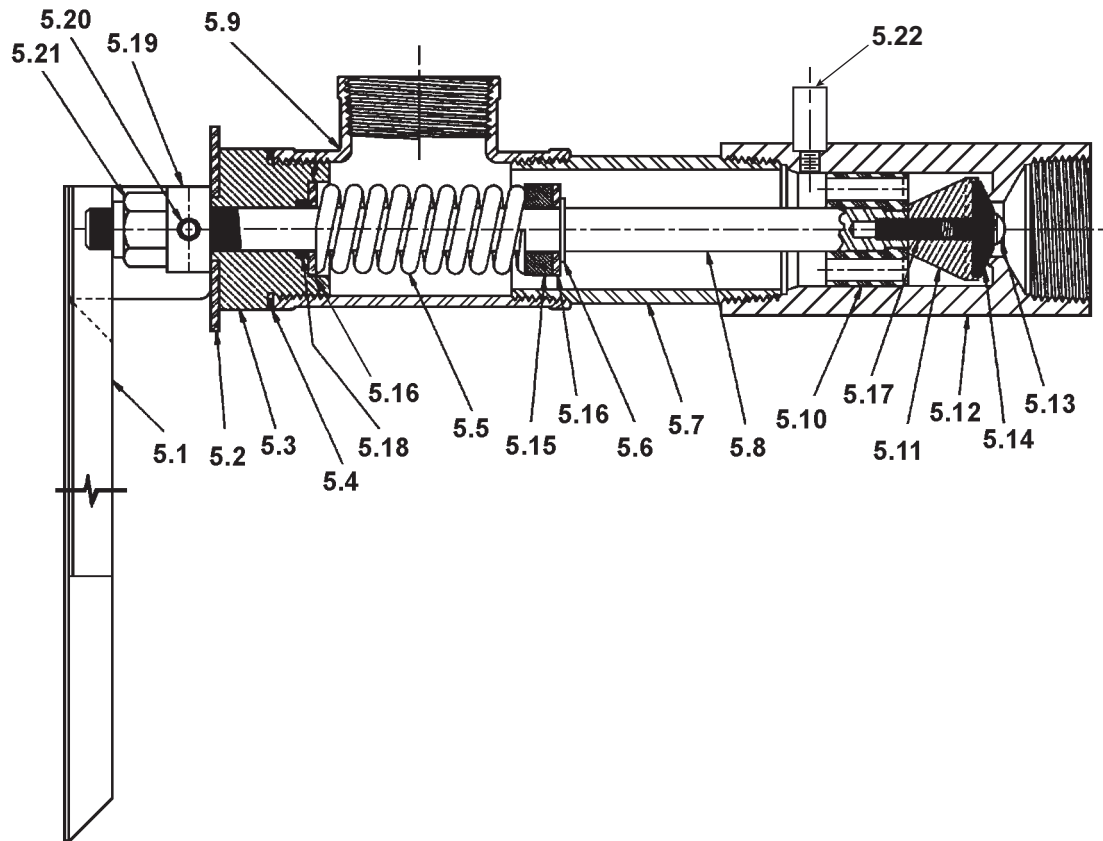
☒ Not less than 2.3 cubic meters (3 cubic yards) of crushed stone around and below drain down waste outlet for drainage.

☒ All dimensions assume standard thread engagement. Variations in manufacturing allow for +/- 3mm (1/8") per threaded joint. To find the tolerance of a dimension, add the number of thread joints in between a dimension and multiply it by 3mm (1/8").

Assembly of Components



Assembly of Components



Parts List

Item	Part No.	Qty.	Description	Item	Part No.	Qty.	Description
1	131-042	1	Base	7.1	111-039	1	Inlet-Drain Fitting
2	113-006NE	1	1¼" NPT Pipe x 825mm	7.2	124-028	1	Gasket
3	169-846	1	90° Reducing Elbow 1¼" NPT	7.3	187-053	1	Stainless Steel Receptor
4	113-006MT	1	1" NPT Pipe x 533mm	7.4	173-009	1	Cup Strainer
5	S90-351B	2	3' Frost-Proof Valve Assy.	7.5	S21-071	1	Stem Pipe Assy.
5.1	S08-040	1	Handle Assy.	7.6	113-1159	1	Spacer, Drain
5.2	142-002BB	1	Stainless Steel Washer	7.7	S05-091	1	Eyewash Yoke
5.3	110-108	1	Bonnet Nut	7.8	107-371	2	Tethered Dust Cover
5.4	124-001BS	1	Gasket	7.9	118-006LJ	1	½" NPT Pipe x 102mm
5.5	135-001AP	1	Spring	7.10	169-726	1	Union ½" NPT
5.6	132-012	1	Retaining Ring	7.11	113-006LG	1	Close Nipple ½" NPT
5.7	113-987	1	Casing Pipe 914mm (3') Bury Depth	7.12	169-725	1	Reducing Bushing 1¼" NPT x ½"
5.8	120-022L	1	Lifting Stem 914mm (3') Bury Depth	7.13	113-006LE	1	1¼" NPT Pipe Nipple
5.9	169-727A	1	Tee	7.14	169-764	1	90° Elbow 1¼" NPT
5.10	145-072	1	Guide	7.15	113-006LT	1	1¼" NPT Pipe x 165mm
5.11	132-011	1	Retainer	7.16	S06-136	1	Plugged Nipple 1¼" NPT
5.12	118-246B	1	Valve Body Assy.	7.17	169-727	2	Pipe Tee 1¼" NPT
5.13	160-138	1	Machine Screw	7.18	113-006NA	2	Close Nipple 1¼" NPT
5.14	169-920	1	Faucet Washer	7.19	169-852	1	Union 1¼" NPT
5.15	182-061	1	Spacer	8	S24-189	1	Showerhead Assembly
5.16	142-002CC	3	Washer	8.1	S24-193	1	Shroud Assembly
5.17	160-251	1	Screw Stud	8.11	187-053	1	Showerhead Shell
5.18	125-001CD	1	O-Ring	8.12	154-147	1	Ring
5.19	161-061	1	Stop Nut	8.2	S24-188	1	Plastic Showerhead Assembly
5.20	165-038	2	Roll Pin	9	169-847	1	90° Elbow 1" NPT
5.21	110-109	1	Bar Nut	10	169-853	1	Coupler
5.22	169-890	1	Connector	11	113-006LW	2	1¼" NPT Pipe x 572mm
6	151-001	2	Curtain Hook	12	114-052E	1	Safety Sign
7	S39-228	1	Eyewash Sub-Assy.	13	204-421	1	Emergency Tag
				14	269-915	1	Grip Pad (not shown)