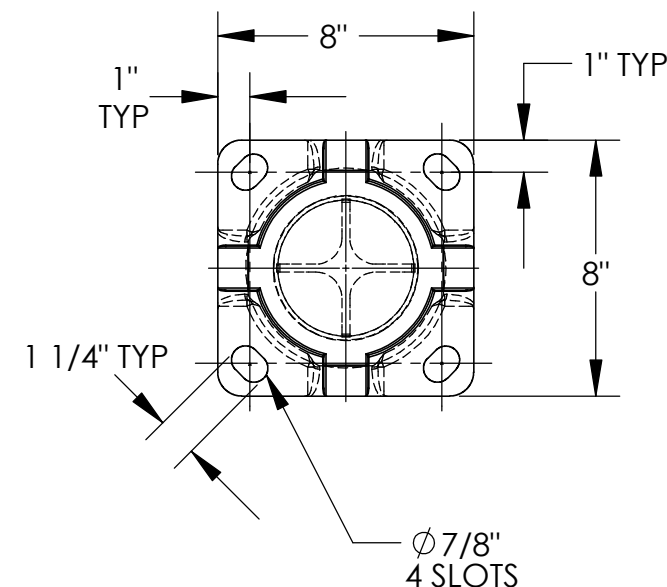
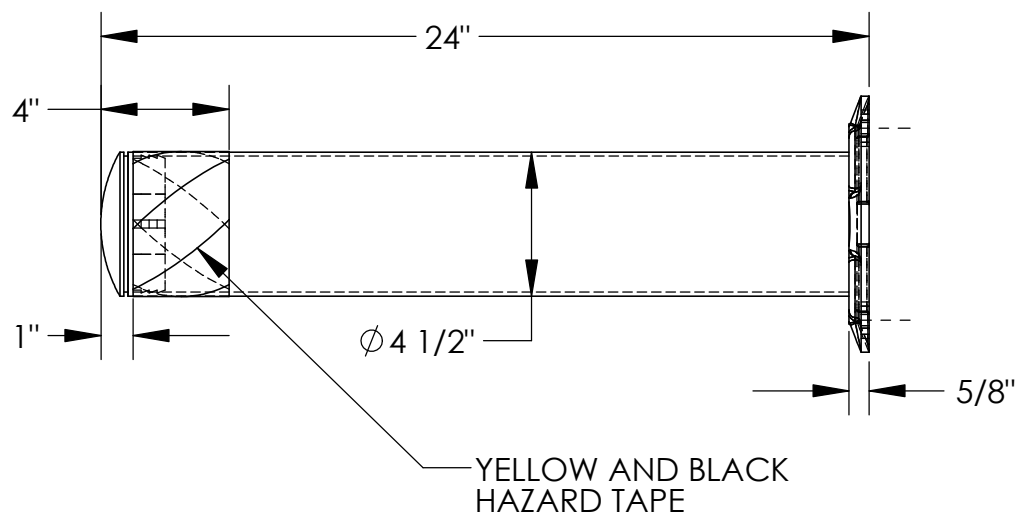


# STEEL SAFETY BOLLARD - BOL -24-4.5

APPROX WEIGHT: 16.13 lbs.  
DOES NOT INCLUDE WEIGHT OF POWER OR PACKAGING!!!

\*\*\* ANY ADDITIONS, DELETIONS, OR OMISSIONS MUST BE CORRECTED ON THIS DRAWING AS THIS DRAWING WILL BE CONSIDERED ALL INCLUSIVE \*\*\*

ALL GRAPHICS PROVIDED ARE FOR REFERENCE ONLY. IF CERTAIN DIMENSIONS ARE CRITICAL PLEASE VERIFY THOSE DIMENSIONS WITH YOUR SALESPERSON



## STANDARD FEATURES

MODEL NUMBER IS: BOL-24-4.5  
OVERALL WIDTH IS: 8"  
OVERALL LENGTH IS: 8"  
OVERALL HEIGHT IS: 24"  
PIPE DIAMETER: 4 1/2"  
LAG DOWN MOUNTING PLATE: 5/8" x 8" x 8"  
WITH MOUNTING SLOTS: 7/8" x 1 1/4" (4 PLACES)  
FOR 3/4" DIA. ANCHOR BOLTS (SOLD SEPERATELY)  
PAINTED SAFETY YELLOW FOR HIGH VISIBILITY  
3" WIDE YELLOW AND BLACK HAZARD TAPE  
REMOVABLE RUBBER CAP

## SPECIAL FEATURES

NONE

DIMENSION TOLERANCE  $\pm 1/4"$

APPROVAL	I, THE UNDERSIGNED, AGREE THAT THE PRODUCT AS REPRESENTED SATISFIES DESIGN AND DIMENSION REQUIREMENTS. I ALSO ACKNOWLEDGE MY DUTY TO CONFIRM PRODUCT AND INSTALLATION COMPLIANCE WITH ALL APPLICABLE FEDERAL, STATE AND LOCAL REGULATIONS AND STANDARDS.	
	<b>ALL SPECIAL UNITS ARE NON-RETURNABLE</b>	
	[ ] As drawn [ ] As marked	
	Signed: _____ Date: _____	
LEAD TIME WILL START UPON RECEIPT OF SIGNED APPROVAL DRAWING		

DISTRIBUTOR'S NAME:		P.O.#
VESTIL MANUFACTURING		X
DRAWN BY: J.BRANDT		W.O.#
DATE: 07/17/08		X
REFERENCE: X	SCALE: 1:6	SALES: X
QUOTED LEAD TIME: X	QUOTE # X	FILE NAME:
		23-007-007