

2-PERSON WALL MOUNT WASH STATIONS

Universal Features

Certified by NSF

Wash stations are constructed from welded #16 gauge type 304 stainless steel. The front, bottom and back are formed from a single sheet with a rolled rim on front and sides. All models have a 10" high backsplash and a 2" drain opening. Exposed surfaces have a blended uniform satin finish.

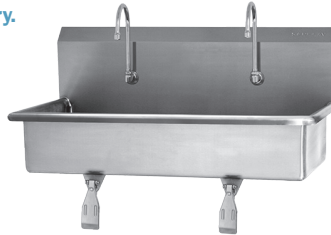
NSF

SANI-LAV Model 54W1

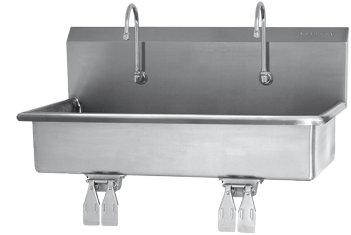
Hands-free design for use in the food service and processing industry.

Features

- Single knee operated valve with connecting hose and fittings
- Swivel gooseneck spout faucet with aerator
- Wall mounting brackets and strainer with basket
- Specially designed knee valves provide easy access to working parts without disconnecting mount or plumbing
- Model 201 mixing check-valve (mechanical)
- **Certified NSF Standard 2 - Food Equipment and NSF/ANSI 372 low-lead**



Model 54W1



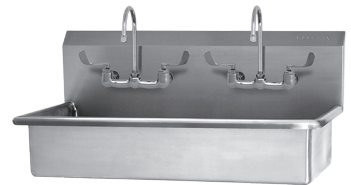
Model 54WSL

SANI-LAV Model 54WSL

Hands-free design for use in the food service and processing industry.

Features

- Double knee operated valves with connecting hose and fittings
- Swivel gooseneck spout faucet with aerator
- Wall mounting brackets and strainer with basket
- Specially designed knee valves provide easy access to working parts without disconnecting mount or plumbing
- Model 201 mixing check-valve (mechanical)
- **Certified NSF Standard 2 - Food Equipment and NSF/ANSI 372 low-lead**



Model 54WFL

SANI-LAV Model 54WFL

Designed for use in hospitals, schools, factories and institutions.

Features

- Splash mount swivel gooseneck faucet with 4" wrist blade handles
- Wall mounting brackets and strainer with basket
- **Certified NSF Standard 2 - Food Equipment and NSF/ANSI 372 low-lead**

SANI-LAV Model 54WAL and 54WBL

Hands-free electronic sensor design for use in food service, hospitals, institutions and factories.

Features

- Splash mount 6" gooseneck spout faucet – chrome plated, solid brass construction
- AC or Battery powered with adjustable sensor range
- Model 201 mixing check-valve (mechanical)
- Wall mounting brackets and strainer with basket
- **Certified NSF Standard 2 - Food Equipment and NSF/ANSI 372 low-lead**



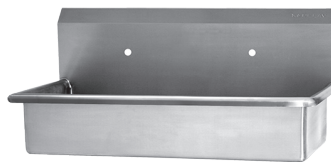
Model 54WAL
Model 54WBL

SANI-LAV Model 54W0

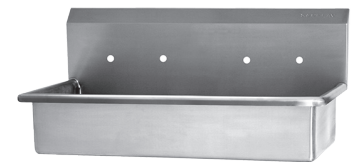
Wash station with single faucet mounting holes.

Features

- Two 0.875" faucet holes
- Wall mounting brackets and strainer with basket
- **Certified NSF Standard 2 - Food Equipment**



Model 54W0



Model 54W8

SANI-LAV Model 54W8

Wash station with 8" on center faucet mounting holes.

Features

- Four 0.875" faucet holes on 8" centers
- Wall mounting brackets and strainer with basket
- **Certified NSF Standard 2 - Food Equipment**