

5-PERSON WALL MOUNT WASH STATIONS

Universal Features

Certified by NSF

Wash stations are constructed from welded #16 gauge type 304 stainless steel. The front, bottom and back are formed from a single sheet with a rolled rim on front and sides. All models have a 10" high backsplash and a 2" drain opening. Exposed surfaces have a blended uniform satin finish.

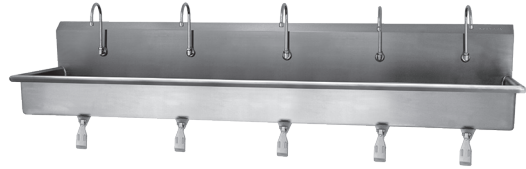


SANI-LAV Model 510W1

Hands-free design for use in the food service and processing industry.

Features

- Single knee operated valve with connecting hose and fittings
- Swivel gooseneck spout faucet with aerator
- Wall mounting brackets and strainer with basket
- Specially designed knee valves provide easy access to working parts without disconnecting mount or plumbing
- Model 201 mixing check-valve (mechanical)
- **Certified NSF Standard 2 - Food Equipment and NSF/ANSI 372 low-lead**



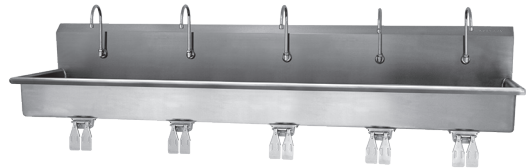
Model 510W1

SANI-LAV Model 510WS

Hands-free design for use in the food service and processing industry.

Features

- Double knee operated valves with connecting hose and fittings
- Swivel gooseneck spout faucet with aerator
- Wall mounting brackets and strainer with basket
- Specially designed knee valves provide easy access to working parts without disconnecting mount or plumbing
- Model 201 mixing check-valve (mechanical)
- **Certified NSF Standard 2 - Food Equipment and NSF/ANSI 372 low-lead**



Model 510WS

SANI-LAV Model 510WF

Designed for use in hospitals, schools, factories and institutions.

Features

- Splash mount swivel gooseneck faucet with 4" wrist blade handles
- Wall mounting brackets and strainer with basket
- **Certified NSF Standard 2 - Food Equipment and NSF/ANSI 372 low-lead**



Model 510WF

SANI-LAV Model 510WA and 510WB

Hands-free electronic sensor design for use in food service, hospitals, institutions and factories.

Features

- Splash mount 6" gooseneck spout faucet – chrome plated, solid brass construction
- AC or Battery powered with adjustable sensor range
- Model 201 mixing check-valve (mechanical)
- Wall mounting brackets and strainer with basket
- **Certified NSF Standard 2 - Food Equipment and NSF/ANSI 372 low-lead**



Model 510WA
Model 510WB

SANI-LAV Model 510W0

Wash station with single faucet mounting holes.

Features

- Six 0.875" faucet holes
- Wall mounting brackets and strainer with basket
- **Certified NSF Standard 2 - Food Equipment**



Model 510F0

SANI-LAV Model 510W8

Wash station with 8" on center faucet mounting holes.

Features

- Twelve 0.875" faucet holes on 8" centers
- Wall mounting brackets and strainer with basket
- **Certified NSF Standard 2 - Food Equipment**



Model 510F8