

COLUMBIA PRODUCTS SANI-LAV®

Model N1 Nozzle Series



Models N1, N1T, N1A and N1SS



Models N1W, N1TW, N1AW and N1SSW



Models N1B, N1TB, N1AB and N1SSB

Features Include

- 3/4" GHT inlet allows direct hose connection
- Quality built with stainless steel and brass parts
- Insulated safety orange, white or black covers with yellow direction arrows
- Maximum operating temperature: 200°F/93°C
- Maximum working pressure 150 psi
- Flow rates 2.5 - 7 gpm
- Available with N17 swivel hose adapter (3/4", female GHT, 3/4" male GHT)

N1 Nozzle Series in Brass**Models N1, N1W, N1B, N1T, N1TW and N1TB**

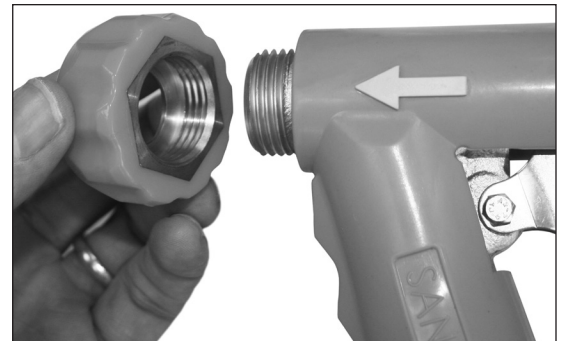
- Brass main body
- Weight 1.7 lbs.

N1 Nozzle Series in Lightweight Aluminum**Models N1A, N1AW and N1AB**

- Aluminum main body
- Weight 1.3 lbs.

N1 Nozzle Series in Stainless Steel**Models N1SS, N1SSW and N1SSB**

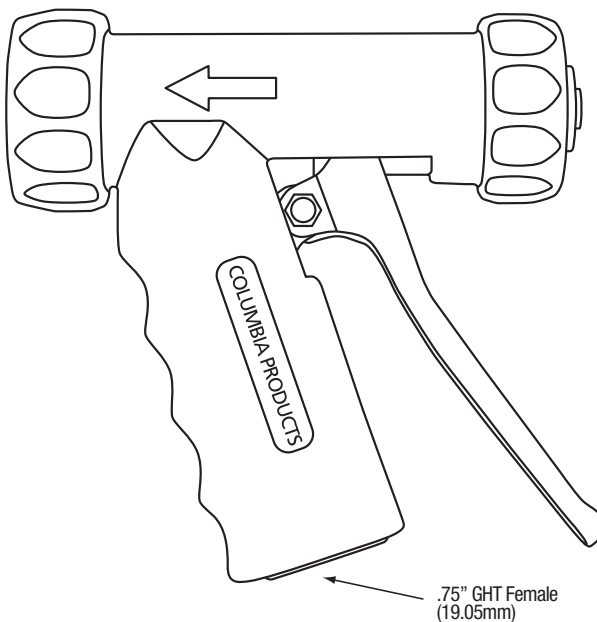
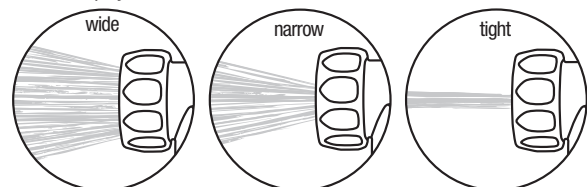
- Stainless steel main body
- Weight 1.7 lbs.



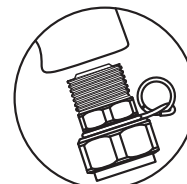
Models N1T, N1TW and N1TB available with removable 3/4" GHT threaded tip



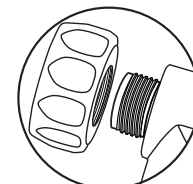
All Models available with N17 swivel hose adapter (3/4", female GHT, 3/4" male GHT)

**Variable Spray Nozzle**

Trigger lever controls variable spray pattern



N17 Swivel Adapter



Remove rubber end piece to expose .75" threaded male hose for attaching accessories.

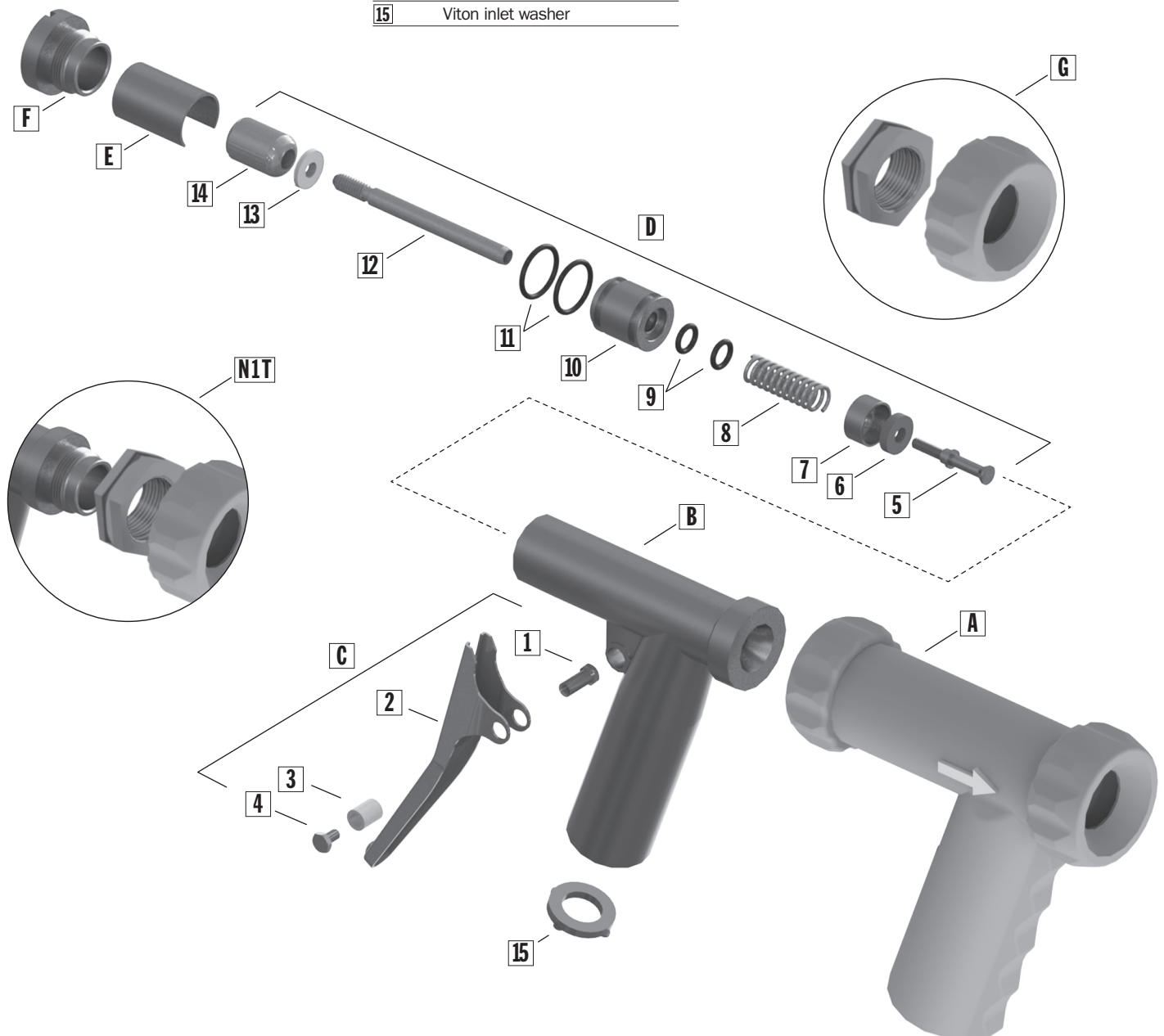
N1 and N1T Replacement Parts

Part No. Description

A	N1OC	Orange insulated cover
A	N1BC	Black insulated cover
A	N1WC	White insulated cover
B	N1MB	Main body
C	N1HR	Handle replacement kit
1		Stainless steel nut
2		Stainless steel handle
3		Stainless steel handle arm sleeve
4		Stainless steel handle bolt

D	N1BR	Barrel cartridge replacement kit
5		Spray tip
6		Seat
7		Axle sleeve
8		Stainless steel spring
9		O-ring
10		Axle bolt
11		O-ring
12		Axle
13		Lock washer
14		Bolt
15		Viton inlet washer

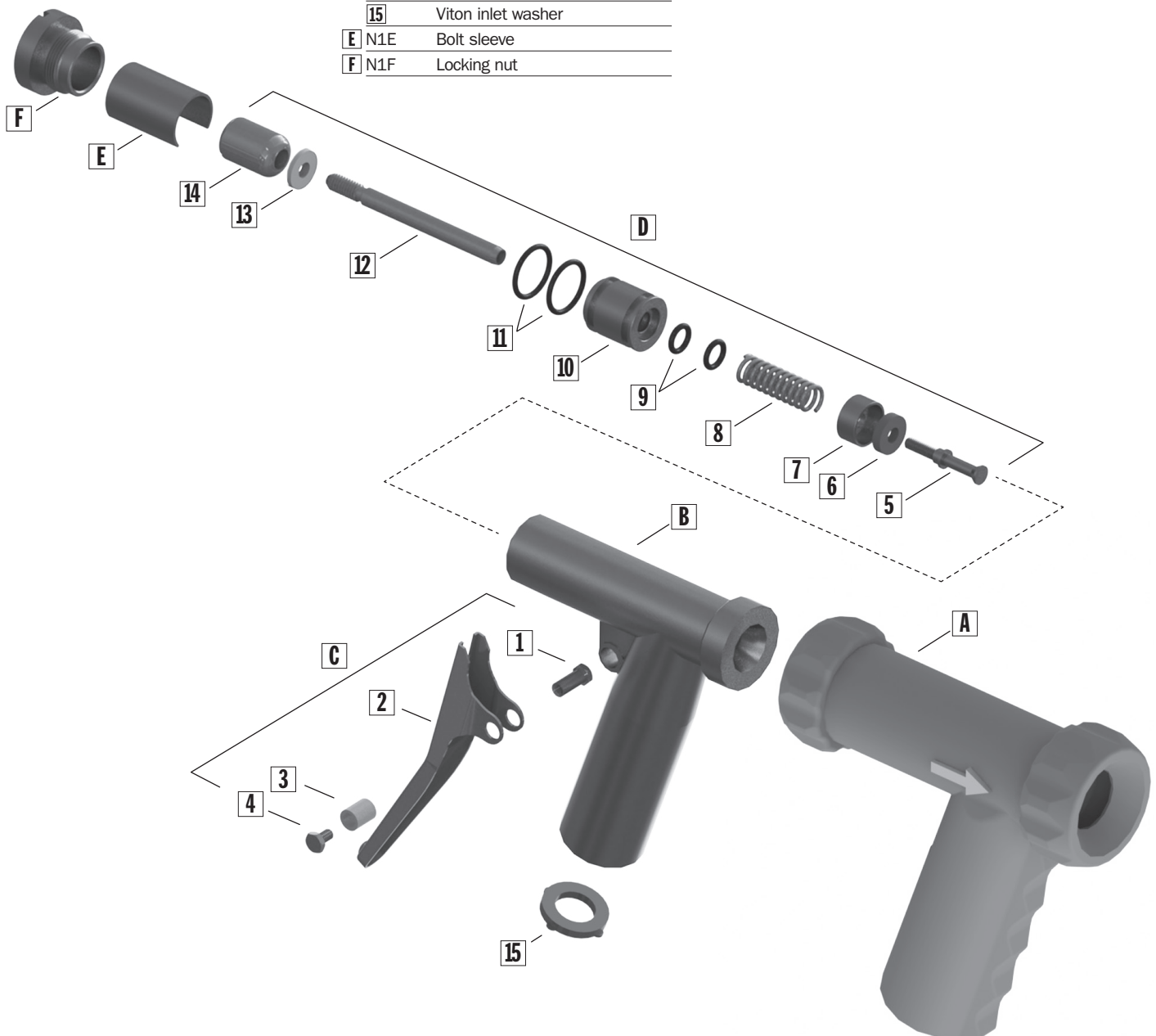
E	N1E	Bolt sleeve
F	N1F	Locking nut
G	N1TP	Threaded tip for model N1T
G	N1TPW	Threaded tip for model N1TB
G	N1TPB	Threaded tip for model N1TW



N1A Replacement Parts

Part No. Description

A N10C	Orange insulated cover	D N1BR	Barrel cartridge replacement kit
A N1BC	Black insulated cover	5	Spray tip
A N1WC	White insulated cover	6	Seat
B N1MB	Main body	7	Axle sleeve
C N1HR	Handle replacement kit	8	Stainless steel spring
1	Stainless steel nut	9	O-ring
2	Stainless steel handle	10	Axle bolt
3	Stainless steel handle arm sleeve	11	O-ring
4	Stainless steel handle bolt	12	Axle
		13	Lock washer
		14	Bolt
		15	Viton inlet washer
		E N1E	Bolt sleeve
		F N1F	Locking nut



N1SS Replacement Parts

Part No. Description

A N10C	Orange insulated cover	D N1BRS	Barrel cartridge replacement kit
A N1BC	Black insulated cover	5	Spray tip
A N1WC	White insulated cover	6	Seat
B N1MB	Main body	7	Axle sleeve
C N1HR	Handle replacement kit	8	Stainless steel spring
1	Stainless steel nut	9	O-ring
2	Stainless steel handle	10	Axle bolt
3	Stainless steel handle arm sleeve	11	O-ring
4	Stainless steel handle bolt	12	Axle
		13	Lock washer
		14	Bolt
		15	Viton inlet washer
		E N1ES	Bolt sleeve
		F N1FS	Locking nut

