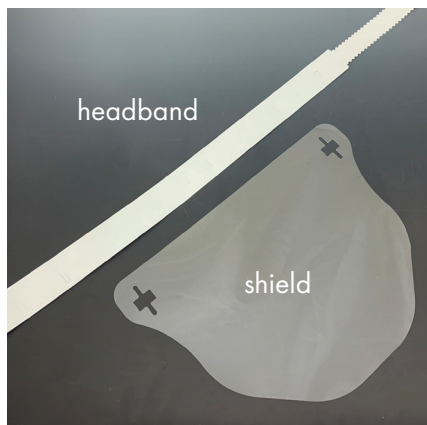


Full Face Shield Assembly Instructions

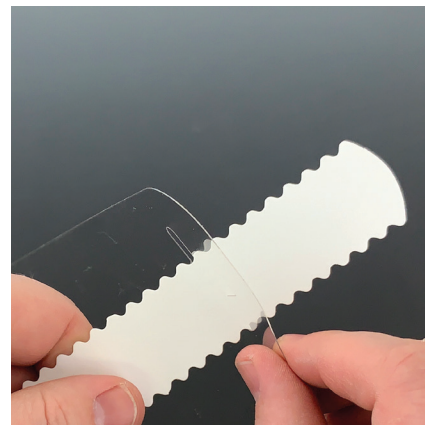
Standard Band Full Face Shield (Item #2100-81)



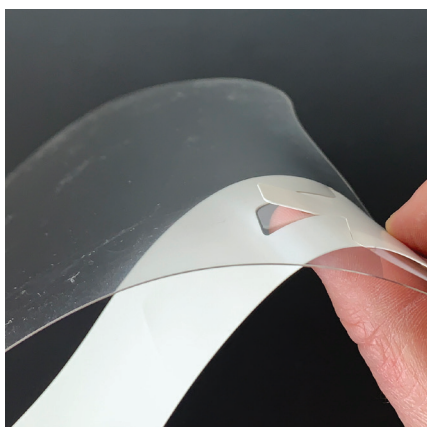
Lay out one (1) shield, one (1) headband.



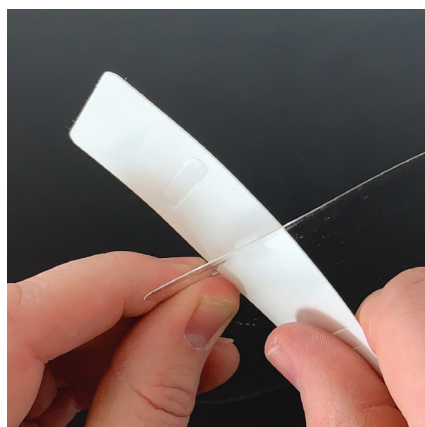
Insert one end of headband through the "plus sign" hole on one side of the shield.



Pull the end of the headband through the hole.



Pop the headband tab through the "plus sign" to secure shield.

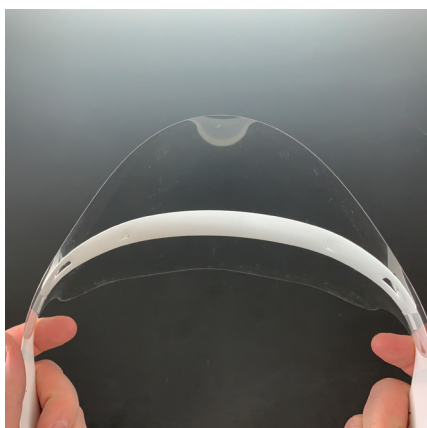


Pull the other end of the headband through the "plus sign" on the other side of the shield.



Pop the headband tab through the "plus sign" to secure shield.

Comfort Band Full Face Shield (Item #2100-82)



Position the headband comfortably, pulling the serrated (wavy) end of the headband through one of the slots on the other end of the headband.



Peel backing off foam.



Apply foam to inside of headband, and then position the headband comfortably.