

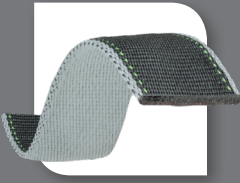
Honeywell
MILLER®



Miller Revolution™

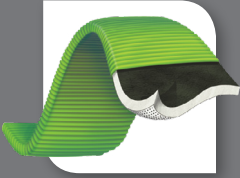
The Turning Point in Harness Design

Webbing Options



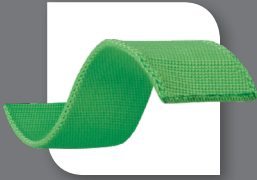
DualTech™

DualTech webbing offers a soft, textured inside and a durable, chemical-resistant polyester outer material. Tested to 7,000 lbs. minimum tensile strength (40 percent stronger than ANSI requirements) for greater safety and longer service life.



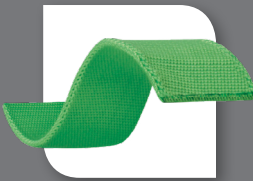
Python®

Patented, cushioned tubular webbing reduces stress to shoulders when using a tool belt.



DuraFlex®

Patented, elastomer webbing specially-formulated to stretch.



Type 10

Type 10 webbing is almost twice as strong as the standards require, and is certain to provide the longest service life possible.



Kevlar®/Nomex®

Rugged, black Kevlar outside and gray Nomex inside provide superior comfort and durability for harsh working environments.

Kevlar® and Nomex® are registered trade marks of E.I. DuPont



Vinyl-Coated

Special vinyl coating on the webbing provides protection against a variety of liquids that could compromise overall performance.





A quantum leap in design, innovation and 21st century safety technology.

The Miller Revolution harness represents a quantum leap in design, innovation and 21st century safety technology. This breakthrough harness was developed based on extensive research with fall protection professionals and workers at height in a range of industries to meet their needs for durability, all-day comfort and safety.

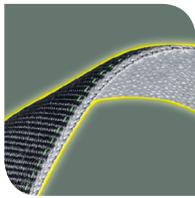
Engineered with 7 unique components and more than 11 key product features, the premium Revolution harness meets and exceeds user needs in the areas of:

- Comfort
- Durability
- Fit
- Flexibility
- Ease-of-use
- Compliance
- Stylish
- Convenience



Its exceptional design has made Revolution the harness of choice in a range of industries:

Wind Energy • Oil & Gas • Construction • Utilities • General Industry



1. DualTech™ Webbing

Donning made easy with two-sided, contrasting color webbing and textures

- Webbing engineered with shape-retention memory for a more comfortable fit
- Unique circular tack provides greater strength, and contrasting colors make inspection easier
- Tested to 7,000 lbs. tensile strength (40% stronger than ANSI requirements) for greater safety and longer service life



2. Self-Contained Label Pack

Integrated pack encapsulates labels minimizing damage and loss



- Conveniently positioned on the chest for easy access
- Durable, polymer construction for extended service life
- Integrated and oversized pull-free lanyard rings



3. ErgoArmor™ Back Shield

Semi-flexible back shield minimizes impact from sharp/heavy snap hooks and self-retracting lifelines

Knitted mesh membrane minimizes moisture absorption and maintains optimal air circulation; helps position back D-ring correctly for 95% of workers

- Self-adjusting channels conform to a variety of body shapes
- Padding conforms to unlimited back contours while allowing superior air flow

Stand-up back D-ring simplifies connection

- The oversized back D-ring minimizes “false” connections

- Specially-designed recesses in back shield accommodate custom identification



4. Web Finials

Clip-on design safely organizes webbing after proper adjustment

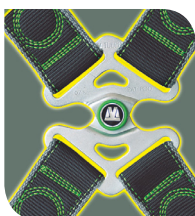
- Constructed of durable, high-impact resistant polymer
- Provides positive gripping surface for easy web adjustment



5. Cam Buckle

Easy, one-hand adjustment/release allows simultaneous adjustment of shoulder straps

- Promotes proper snug fit; will not slip or misadjust
- Constructed of high-impact polymer, lightweight aluminum and stainless steel materials that resist rust/corrosion
- Independent adjustment of upper and lower torso to accommodate seasonal clothing



6. PivotLink™ Connection

Unique rotary design provides greater comfort in bending/mobility

Provides attachment point for belts/tools/accessories

- Better ergonomic fit with unique hip rotation point
- Independent adjustment of upper and lower torso

- Lightweight design and materials resist rust/corrosion



7. Integrated Accessory System

Modular attachment design provides connection points for belts/tools/accessories (more on next panel)

- Attach/remove accessories for greater comfort and convenience
- Designed to distribute the weight of accessories across the hips and shoulders for comfort and mobility
- Integrated and oversized pull-free lanyard rings
- Optional universal attachment clips available

Integrated Accessory System

The PivotLink Connection provides an attachment point for a multitude of accessories and individual tool pouches with an innovative design that accommodates:

- Pouches, tool holders, cell phones, water bottles and more
- A tool belt that easily attaches and detaches – distributing weight across the hips and shoulders for a more comfortable fit and greater mobility
- Universal attachment clips that fit on your existing accessories or tool rig and easily attach/detach



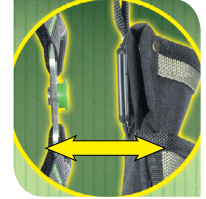
Harness models designed with side D-rings/belt/pad also accommodate the Integrated Accessory System



Accessories have a female clip that attaches and locks over the male connection point



Once attached, the accessory pivots to maintain a level position



Easily remove and/or change accessories for convenience by simply lifting from connection point

Accessories



**Mini or Regular Cell Phone/
Radio Holders**
RIA-T1/ & RIA-T2/



Water Bottle Holder (Bottle not included)
RIA-T3/



Medium or Large Open Bolt & Bull Pin Bag
RIA-T4/ & RIA-T5/



2 Pocket Nail & Tool Pouch
RIA-T6/



Large Multi-Pouch Tool Bag with 2 Steel Hammer Loops
RIA-T7/



Padded Hammer Loop
RIA-T8/



Open End Pliers & Tool Holder
RIA-T9/



Zippered Cylindrical Utility Pouch
RIA-T10/

Belts

Two belt options are available, with and without a back pad. Easily snap-on or snap-off belt or complete tool rig – belt loops no longer needed.



Belt with PivotLink Attachments and 5 Accessory Connectors
RIA-B1/*RIA-B2/



Shoulder/Leg Pads
RIA-P1/



Seat Pad
RIA-P2/

*Includes back pad

MILLER REVOLUTION HARNESSES

Available in six webbing options

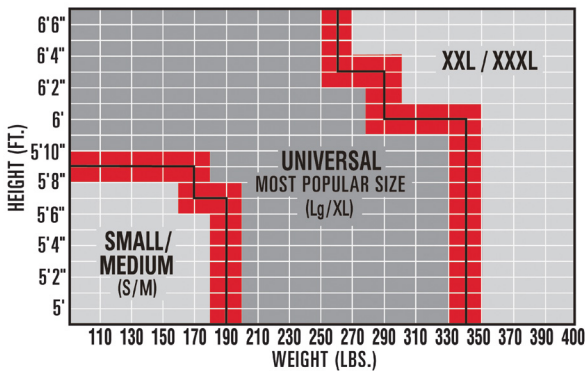
Standard Features:				Standard Features:	
<ul style="list-style-type: none"> • Quick-Connect Chest Buckles • Cam Buckles • ErgoArmor Back Shield • Stand-Up D-Ring • Self-Contained Label Pack • Web Finials 				<ul style="list-style-type: none"> • Mating Chest Buckle • Cam Buckles • D-Ring Back Pad • Stand-Up D-Ring • Self-Contained Label Pack • Web Finials 	
DUALTECH™ WEBBING	PYTHON® WEBBING	KEVLAR®/NOMEX® WEBBING	DURAFLEX® WEBBING	VINYL COATED WEBBING	SPECIAL FEATURES
RDT-QC/UBK	RPY-QC/UGN	RKN-QC/UBK	RDF-QC/UGN		Quick-Connect Buckle Legs
RDT-TB/UBK	RPY-TB/UGN	RKN-TB/UBK	RDF-TB/UGN	RPC-TB/UGN	Tongue Buckle Legs
RDT-QC-B/UBK	RPY-QC-B/UGN	RKN-QC-B/UBK	RDF-QC-B/UGN		Removable Belt, Quick-Connect Buckle Legs
RDT-TB-B/UBK	RPY-TB-B/UGN	RKN-TB-B/UBK	RDF-TB-B/UGN		Removable Belt, Tongue Buckle Legs
RDT-QC-DP/UBK	RPY-QC-DP/UGN		RDF-QC-DP/UGN		Side D-Rings & Pad, Quick-Connect Buckle Legs
RDT-TB-DP/UBK	RPY-TB-DP/UGN		RDF-TB-DP/UGN		Side D-Rings & Pad, Tongue Buckle Legs
RDT-QC-BDP/UBK	RPY-QC-BDP/UGN		RDF-QC-BDP/UGN		Removable Belt, Side D-Rings & Pad, Quick-Connect Buckle Legs
RDT-TB-BDP/UBK	RPY-TB-BDP/UGN		RDF-TB-BDP/UGN	RPC-TB-BD/UGN	Removable Belt, Side D-Rings & Pad, Tongue Buckle Legs

WEBBING OPTIONS (CONTINUED)

Standard Features:	
<ul style="list-style-type: none"> • Mating Chest Buckles • Cam Buckles • Stand-Up D-Ring • Self-Contained Label Pack • Web Finials • Integrated Back/Shoulder Pad 	
TYPE 10 WEBBING	SPECIAL FEATURES
R10CN-MB/UGN	Mating Buckle Chest and Legs, Integrated Back/Shoulder Pad
R10CN-TB/UGN	Mating Buckle Chest, Tongue Buckle Legs, Integrated Back/Shoulder Pad
R10CN-MB-BDP/UGN	Mating Buckle Chest and Legs, Integrated Back/Shoulder Pad, Removable Belt, Side D-rings & Pad
R10CN-TB-BDP/UGN	Mating Buckle Chest, Tongue Buckle Legs, Integrated Back/Shoulder Pad, Removable Belt, Side D-rings & Pad

SKU numbers listed are for **Universal** size. Harnesses are also available in **Small/Medium** and **XXL/XXXLarge**, by replacing the "U" in the SKU number with "S/M" or "XXL/XXXL" (Ex: RDT-QC-B/XXL/XXXL). All Miller brand fall protection products meet applicable OSHA, ANSI and CSA requirements. **Rated to 400 lbs. (181.4 kg) capacity.**

HARNESS SIZING CHART



SKU	DESCRIPTION
ACCESSORY KITS & RIGS (FITS SIZES 32" TO 54")	
RIA-K1/1 (Job Kit 1)	• Mini Cell Phone Holder w/Snap-On Connector • Water Bottle Holder
RIA-K2/1 (Job Kit 2)	• Regular Cell Phone Holder/Jobsite Radio Holder w/ Snap-On Connector • Water Bottle Holder • Large Multi-Pouch Tool Bag w/2 Steel Hammer Loops
RIA-R1/ (Tool Rig 1)	• Belt with PivotLink Attachments • 5 Accessory Connectors • Large Multi-Pouch Tool Bag w/2 Steel Hammer Loops • 2 Pocket Nail & Tool Pouch • Zippered Cylindrical Utility Pouch
RIA-R2/ (Tool Rig 2)	• Belt w/Pad and PivotLink Attachments • 5 Accessory Connectors • Large Multi-Pouch Tool Bag w/2 Steel Hammer Loops • 2 Pocket Nail & Tool Pouch • Zippered Cylindrical Utility Pouch
RIA-R3/ (Tool Rig 3)	• Belt with PivotLink Attachments • 5 Accessory Connectors • 2 Large Open Bolt & Bull Pin Bags • Padded Hammer Loop
RIA-R4/ (Tool Rig 4)	• Belt w/Pad and PivotLink Attachments • 5 Accessory Connectors • 2 Large Open Bolt & Bull Pin Bags • Padded Hammer Loop
IDENTIFICATION KITS	
RIA-BL/	(10) Blue Self-Adhesive Labels w/Write-In Window
RIA-YL/	(10) Yellow Self-Adhesive Labels w/Write-In Window
RIA-RD/	(10) Red Self-Adhesive Labels w/Write-In Window
RIA-GN/	(10) Green Self-Adhesive Labels w/Write-In Window
CONNECTION POINTS	
RIA-C1/6	Sliding Belt Accessory Connectors (3 pack)
RIA-C2/6	Universal Accessory & Belt Attachment Clip (2 pack)

Limitless Possibilities. Ask The Expert.

Technical Service: 800.873.5242
www.millerfallprotection.com

Honeywell Industrial Safety

900 Douglas Pike
Smithfield, RI 02917-1874
USA:
Phone 800.430.5490
Fax 800.322.1330
www.honeywellsafety.com

Canada:
Phone 888.212.7233
Fax 888.667.8477

